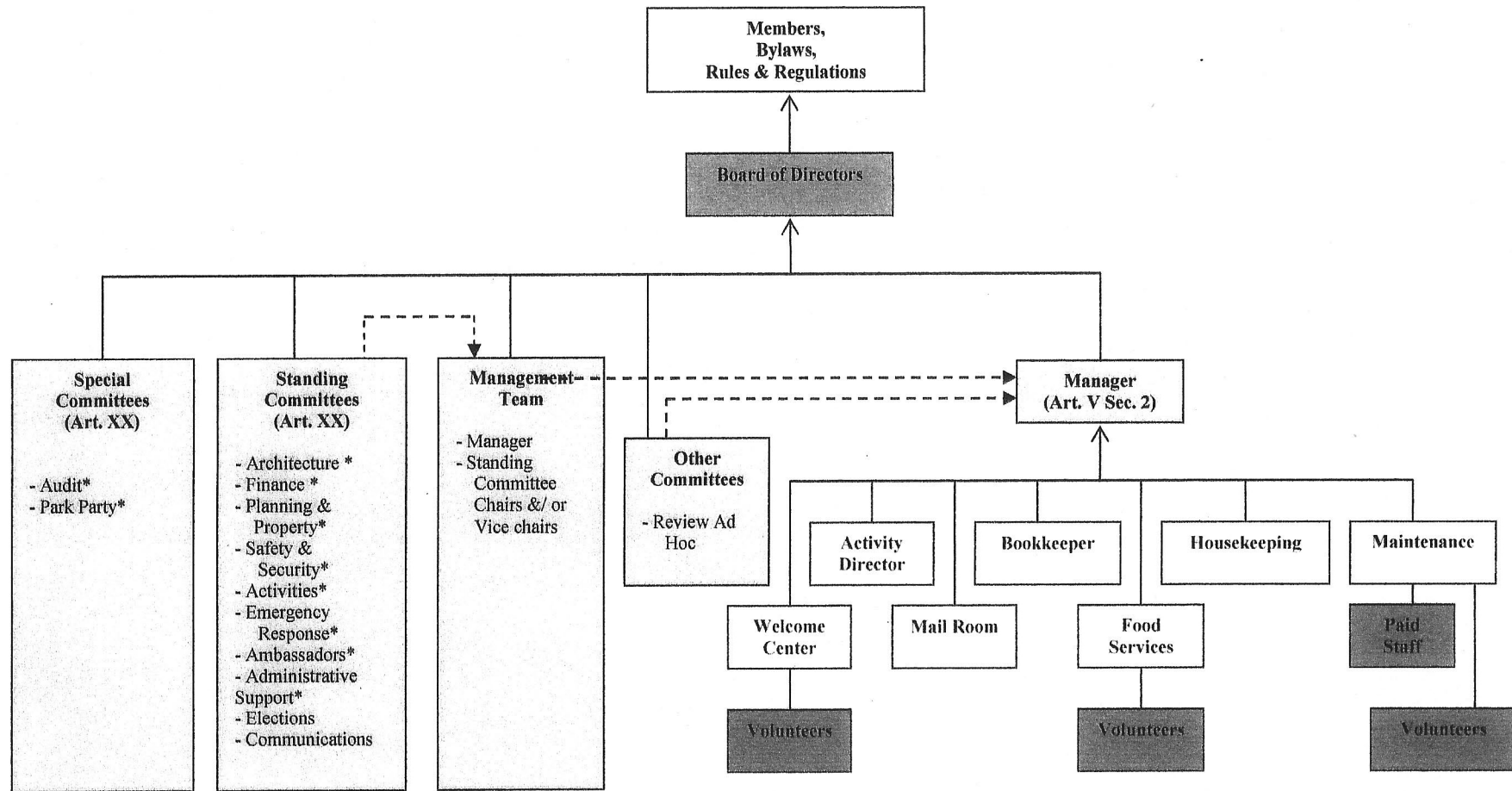


**Sunscape Estates RV Park Cooperative
Organizational Flow Chart – Tier 1 (Revised March 7, 2015)**



Notes:

- * indicates as listed in the Bylaws
- Solid lines indicate Strategic lines of authority; dotted lines indicate Operational lines of authority.
- Standing Committees are BOD Chartered and long term in nature; Special Committees are non Chartered and short term in nature.
- Revised March 2011 to reflect Feb. 8/11 BOD motion re: Projects & Maintenance Committee reclassification.
- Revised January 2012 to reflect January 10 BOD motion to combine Fire and Medical to Emergency Response Committee.
- Revised January 2013 to reflect January 8 BOD motion to place Safety with Planning on an interim basis.
- Revised February 12, 2014 to reflect Annual Meeting Bylaws changes.
- Revised March 7, 2015 to reflect BOD motions to accept Communications and Elections Charters indicating Chairs to be on MT.